

Product Catalogue

kermodeoverland.com



EXPLORE BEYOND LIMITS

Season : 2024





Where the Road Ends Your Story Begins

**We provide flexible shipping and offer
free roof tent installation locally.**

How We Can Help

- Roof Top Tents
- Car & Truck Racks
- Lighting & Power
- Recovery Gear
- Awnings & Tents
- Kitchens & Coolers
- Water & Sanitation
- Bike Racks
- Bedding
- Accessories

Address
2620 Southforks Rd Nanaimo
(Only by appointment)

C: 1-250-740-1844
E: info@kermodeoverland.com

Copyright © 2024 Kermode Overland
All Rights Reserved.
Marketing by evolutionbusiness.ca





Where the Road Ends Your Story Begins

Introduction to Our Company	04
Roof Tents	05
Bed Racks and CrossBars	10
Awnings	15
Bike Hitch Racks	18

Portable Fridges	19
Adventure & Recovery Gear	21
Water and sanitation	27
Power and Lighting	30
Cooking and power solutions	32

THE BIRTH OF ADVENTURE

Nestled amidst the pristine beauty of Vancouver Island, British Columbia, our story begins with a simple love for the outdoors. It's the untravelled roads, the giant forests, and beautiful rivers, lakes and beaches of Vancouver Island and BC that called out to Chris, the heart and soul behind Kermode Overlanding. A backpacking trip across Europe in 2012 sowed the seeds for what would become a thriving venture. While staying in a hostel in Germany, an advertisement for a campervan rental caught his eye. The idea struck a chord, and upon our return, Van Ventures Rentals was born, a campervan rental company serving the adventurers of Vancouver Island for five beautiful years.

But as his family grew and playful summers with our young ones became the priority, we realized that the campervan business was taking away from these cherished moments. As we contemplated our next steps, one thing became clear – our customers loved the rooftop tents on our vans. That spark ignited the transition from rentals to selling overlanding essentials, from rooftop tents to awnings, truck racks, auto showers, camping equipment and beyond.



WHY KERMODE?

The majestic Kermode Bear, also known as the Spirit Bear, became the namesake for our brand. Unique to British Columbia's coastal regions, this bear's recessive gene gifts it a pristine white hue. More than just a symbol of our region, it embodies strength, joy, resilience, playfulness, and even altruism - values that deeply resonate with our brand ethos.

JOURNEY WITH CHRIS

Chris's passion for camping, overlanding, and exploring Vancouver Island's coastal terrains has spanned a lifetime. Now, as a father of three, this passion translates into heartwarming trips with family and friends across BC's sprawling landscapes. For Chris, overlanding is more than a hobby; it's a way of life, a means to connect with nature, and an avenue to share his love for the outdoors with the world."



Roof Tents

Adventure Series Hard-Shell Rooftop Tent (2 Person)

Designed for four-season exploration, this hard-shell rooftop tent measures 82.68" in length, 57.09" in width, and 6.69" in height when closed, expanding to 82.8" x 58.8" x 46.8" when open. The tent weighs 128 lbs and features a sturdy aluminum shell with 280GSM fabric that is waterproof rated at 3000+, offered in a sleek black shell and dark grey fabric.



Family-Sized Large Rooftop Tent with Internal Roof Rack System - Black (4-5 Person)

Tailored for family adventures, this spacious tent unfurls to a length of 87.40", width of 53.15", and height of 9.06" when closed, and 80.71" x 98.43" x 53.15" when open. The 280G Polyester-cotton canvas provides a waterproof rating of 3000+, ensuring a dry and comfortable environment.

Classic Plus Soft Shell Roof Tent (2-3 Person)

This soft-shell roof tent, available in grey with a green rainfly, offers a roomy interior with open dimensions of 63" x 122" x 50" and includes a comfortable sleeping mattress sized at 63" x 95" x 2.5". The tent features 420D Polyester Oxford material, waterproof at 2500mm, and is UV and mold resistant.





Classic Soft Shell Roof Top Tent (2 Person)

Compact and practical, this tent's open size is 143 x 240 x 126 cm (56" x 95" x 50"), with a sleeping area of 140 cm x 240 cm (55" x 95"). The grey tent with a black rainfly is constructed from 420D Rip-stop Polyester Oxford, waterproof at 2500mm, and comes with a high-density mattress 60mm thick.

Large Piiq Roof Top Tent Hardshell (2-3 Person)

This hardshell roof tent, measuring 7' long x 4' 7" wide with internal dimensions of 78.7" x 59" x 45", offers a sleek black shell with grey walls and weighs 130 lbs. It features a 280G Polyester cotton canvas and a memory foam covered mattress, waterproof at 3000mm, and is fully insulated.



Piiq Roof Top Tent with Internal Racks (2 Person)

At 7' long and 56" wide, this tent weighs 130 lbs and provides internal roof racks on top. It shares the black shell and grey wall design with the Piiq series and includes a memory foam covered mattress, also waterproof at 3000mm and fully insulated.



Sky Luxe Roof Top Tent Premium (3-4 Person):

Awning attachment and Annex Room attachment available.

With open dimensions of 2.1 x 2.2 x 1.28 meters (6.9 x 7.2 x 4.2 feet) and weighing 200 lbs, this tent is built for extra space. Its aluminum honeycomb board construction and high-grade Oxford fabric with a 5000mm PU coating offer water resistance and UV protection. It includes a 4 cm high-density foam mattress and a 2.3m telescoping aluminum ladder.



SkyNomad Pro (4-5 Person):

Capable of accommodating 4-5 people, the tent boasts dimensions of 230 x 200 x 110 cm (90.55 x 78.74 x 43.31 inches) when open. The aluminum hard shell can support up to 300kg (661lbs) and features advanced WL-Tech Fabric with a closed thickness of 30 cm (11.8 inches).



Sky Rover (1-2 Person):

Ideal for compact spaces, the Sky Rover opens to 212 x 120 x 95 cm (83 x 47 x 37 in) and closes to 127 x 110 x 32 cm (50 x 43 x 13 in), weighing 34 kg (75 lbs). It includes a high-density 3 cm mattress and is built with quality 600D Rip-Stop poly oxford and a strong aluminum alloy frame.





Skyward Inflatable Roof Top Tent (2-3 Person):

Inflate to comfort with this tent's dimensions of 210 x 135 x 145 cm (83 x 53 x 57 inches), and a weight of 43 Kg (94 lbs). The design includes a 5-layer durable air tube and a dual-eave to combat wind, while the heavy-duty poly oxford cover with PVC coating and PU5000mm waterproof rating ensures a dry stay.

White Hardshell Slim Roof Tent (2 Person):

Hardshell roof top tent 7 ft long x 4 ft wide. Has 3 inch memory foam mattress, comes with all the mounting hardware, ladder, and interior lighting. 125 lbs. Easy to mount.



Cozy Nest Blanket

A down-filled blanket designed for outdoor enthusiasts. Filled with premium 90% white duck down and encased in durable 100% nylon fabric. With dimensions of 152 x 203 cm (approximately 60 x 80 inches). Easy to carry with its convenient carrying case. Available in stylish green, orange, and grey colours.



Cozy Nest Sleeping Bag

Stay snug in sub-zero adventures with the Cozy Nest Sleeping Bag. Crafted for warmth in cold climates, it boasts 90% white duck down insulation within a spacious 225 x 95 cm frame. The waterproof 38T nylon fabric ensures durability, while its lightweight design enhances portability. Rated for temperatures as low as -15°C (5°F), its sleek black and grey design suits any outdoor setup. Ideal for camping and mountaineering, the Cozy Nest is your cold weather haven.



Bed Racks and Crossbars

Expedition Platform Max

Sized at 62.9" x 47.2". Crafted from durable aluminium with a sleek black powder-coat finish. Integrated T-slots. Its low-profile design enhances aerodynamics and fuel efficiency.



Expedition Platform Midi

Sized at 55.1" x 39.4". Crafted from high-strength aluminium with a sleek black powder-coat finish. Integrated T-slots. Its low-profile design reduces noise and drag for improved fuel efficiency.





Universal Roof Cross Bar (attaches to rails)

Introducing our Universal Roof Rack Cross Bar, designed to fit most vehicles with raised side rails. Features include a secure locking system, adjustable clamps, and durable aluminum construction. Available in two lengths and colors, it's perfect for outdoor adventures or daily utility needs.

Horizon Hauler Universal Truck Bed Rack

Compatible with a wide range of pickup truck models, it boasts sturdy aluminium alloy construction, supporting up to 650 lbs (300kg). With adjustable dimensions and easy installation. Integrated LED rear lights. Dimensions: Width adjustable from 51.2" to 66.9", length 51.2", height 14" – 21". Weight: 95 lbs.



Flexi Low Profile Bed Rack

Constructed from 1/8 inch galvanized steel. Weighing 51 lbs & measuring L65" x W9.5" x H7", it's easy to install with drilling required for secure mounting.



Universal Truck Cross Bars

It's a universally fitting, adjustable, and removable accessory that makes hauling roof tents to bikes effortless. Crafted from sturdy Aluminum and Nylon, it boasts a load capacity of 220 lbs. Installation is straightforward, though it requires secure bracket attachment to the bed. Available in sleek silver and black.



Versa Universal Truck Bed Rack System

Compatible with various pickup trucks, load capacity of up to 330 lbs and an off-road capacity of 253 lbs. Adjustable height and width, and easy installation. Dimensions: L68" W19" H7.5". Weight: 77 lbs.



Jeep Gladiator's Bed Rack

With a static load capacity of 992 lbs, it's perfect for roof top tents and gear. Made from premium carbon steel, it's durable and weather-resistant, weighing only 159 lbs. Easy bolt-on installation, customizable, and adventure-ready. Dimensions: L58" W11" H7".



Endura Universal Bed Rack

Featuring a 3MM (1/8 inch) steel thickness and 1.5mm (1/16 inch) steel tube thickness. With adjustable dimensions (L62" x W24" x H20"). Its zinc plating and powder coating offer maximum corrosion protection. Compatible with a wide range of truck brands. Weighing 180 lbs.



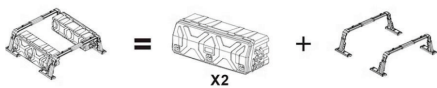
Toyota Tacoma Roof Carrier

Upgrade your Toyota Tacoma (2015-2022) with the TacomaTrail Elite Roof Rack. Easy install, robust aluminum build. Fits 54.23" (137.72 cm) wide, with inside-to-inside width of 48.42" (122.99 cm), and a length of 61.1" (155.19 cm). Handles up to 48 lbs (21.77 kg). LED light bar ready, sunroof & antenna friendly. Versatile T-slot channels. Ideal for increased cargo capacity and reliability.



Overland Pod Truck Bed Rack System Small - Large

This comprehensive overland system includes a spacious 2 x 130 L GearBoxes (46, W16, H17, Weight 62 lbs) or 2 x 95L GearBoxes (L33, W16, H17, Weight 51 lbs), crafted from durable aluminium. Alongside the storage box, you'll find four support brackets, each measuring L42 W21 H14 and weighing 83 lbs. Additionally, two cross bars, each measuring L47 W9 H5 and weighing 22 lbs.





Kermode AutoShade Awning 7

Kermode AutoShade Pro Awning 8

Available in two sizes: 7 ft x 98.4 inches and 8ft x 98.4 inches, perfect for various vehicles. Constructed with durable Vinyl PVC fabric and a lightweight alloy aluminium frame.

Material:

Vinyl PVC fabric

Various Sizes:

7 ft x 98.4 inches/8ft x 98.4 inches

Auto Side Awning Medium Soft 7 ft

7 ft wide x 6 ft long and adjustable poles up to 7 ft in height. Crafted with a durable aluminium frame and 420D Oxford fabric. Waterproof travel. Complete with stainless steel mounting hardware. Available in black or beige.

Size:

7 ft wide x 6 ft

Feature:

Stainless Steel Hardware



Auto Side Awning Large Soft 8 ft

8 ft wide x 6 ft long and adjustable poles up to 7 ft in height. Crafted with a durable aluminium frame and 420D Oxford fabric. Waterproof travel. Complete with stainless steel mounting hardware. Available in black or beige.

Size:

8 ft wide x 6 ft

Feature:

Oxford fabric/Water Proof



Batwing Awning 7 ft Wide

Offering over 100 sq. ft of UV-protected coverage for quick shade and protection. With customizable mounting options and robust construction from Waterproof Oxford Canvas 420D UV Fabric, it's durable yet portable at 44 lbs. It's supported by poles for stability.

Size:	Weight:
100 sq.	44 lbs



Batwing Awning 8 ft Wide

Offering over 130 sq. ft of UV-protected coverage for quick shade and protection. With customizable mounting options and robust construction from Waterproof Oxford Canvas 420D UV Fabric, it's durable yet portable at 45 lbs. It's supported by poles for stability.

Size:	Weight:
130 sq.	45 lbs

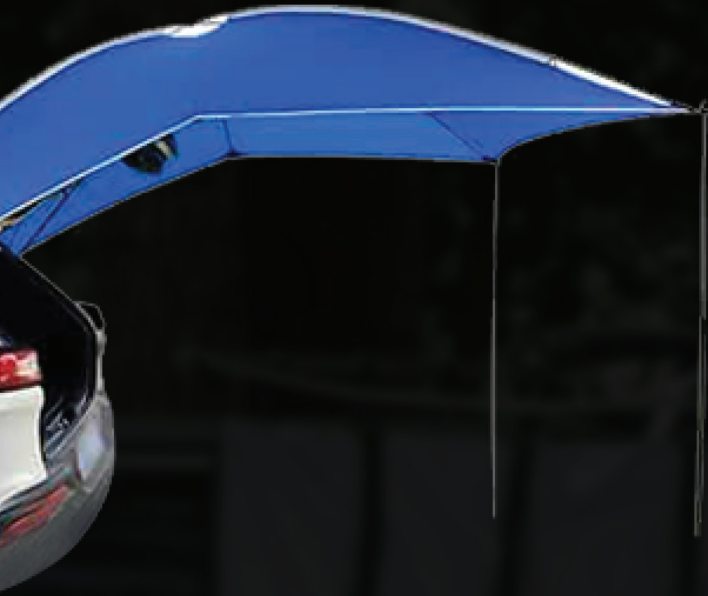


Batwing Awning with Annex Room 7 ft

Batwing Awning & Annex Room 8 ft

Available in 7 ft and 8 ft widths, it transforms into a fully enclosed space with zip-up walls for various outdoor activities. Crafted from durable waterproof materials. Easy to set up and transport, it comes with separate storage bags for convenience.





RearGuard Vehicle Awning

With a coverage area extending up to 76+ square feet. Crafted from durable rip-stop polyester fabric. Versatile and adaptable to all vehicles. It includes adjustable height for privacy and easy handling, weighing just 8.8 lbs and featuring alloy steel construction.

Size:	Weight:
76+ square feet.	8.8 lbs

Hitch Haven Vehicle Hammock System

With dimensions tailored to fit any standard 2" hitch, it's a versatile addition to your vehicle setup. It can support up to 300 lbs, perfect for solo or duo lounging. Complete with a standard hammock

Size:	Weight:
2" hitch	300 lbs





Universal bike hitch rack 2 E-bikes

2-E-Bike 2-Inch Trailer Hitch Rack, meticulously designed for electric bikes. Constructed from aviation-grade aluminium and featuring a frosted texture for wear and dirt resistance. With a load capacity of 132 lbs. It has a fully foldable design. Anti-theft security devices and firm metal clips with soft rubber cases. With dimensions of 49.21 x 33.27 x 31.69 inches and a weight of 39.68 lbs.



Universal Bike hitch rack 2 bikes

Compatible with most bikes, 2" hitch. Offers a quick installation process and includes a locking system. Two bikes and a load capacity of 110.23 lbs. Additionally, it boasts a distance between bikes of 7 inches, folded dimensions of 33.07 x 19.69 x 31.5.



Universal bike hitch rack 4 bikes

Capable of accommodating up to 4 bikes. 2 inch hitch receivers, including a safety pin and locking system. With dimensions of 44.88 x 22.83 x 29.13 inches (114 x 58 x 74 cm) and a weight of 29.54 lbs (13.4 kg).



Portable Fridges



Kermode TrekChill 35L Portable fridge

With dimensions of 30" L x 20" W x 12" H and a 35-litre capacity, this fridge features a dual-zone design for simultaneous cooling and freezing. Weighing 40 pounds. Key Features:- Large Dual Zone Capacity.

Size:
30" L x 20" W x 12" H

Capacity:
35-litre



Kermode TrekChill 55L Portable fridge

With dimensions of L30" x W20" x H25" and a 55-litre capacity. Features: - Dual-Zone Cooling. High performance compressor ensures rapid cooling down to 32°F (0°C). - Smart Control.

Size:
L30" x W20" x H25"

Capacity:
55-litre



Kermode EcoChill 55L Portable fridge

With a temperature range from +20°C to -20°C (+68°F to -4°F), it serves as both a refrigerator and a freezer. Weighing just 34.4 lbs

Temperature Range:
+20°C to -20°C

Weight:
34.4 lbs



Kermode SlideChill 21L Portable fridge

With a temperature range from +20°C to -20°C (+68°F to -4°F), it functions as both a fridge and a freezer. Weighing only 15 kg (33 lbs), it's lightweight and efficient. The slide drawer design maximises space and provides easy access to contents.

Temperature Range:
+20°C to -20°C

Weight:
15 kg (33 lbs)



Adventure & Recovery Gear

Deluxe 4 Pc Tow Kit

Including 2x 3" shackles, strap, and carrying case. With dimensions of L14" x W9" x H5" and a weight of 10 pounds, it's compact and portable. It provides assistance for vehicle recovery and towing needs.

Size:

L14" x W9" x H5

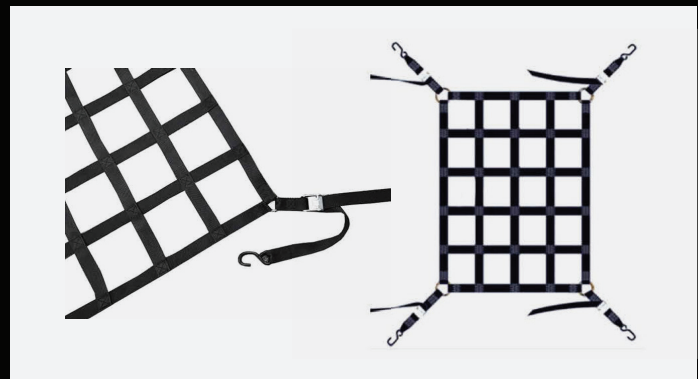
Weight:

10 pounds



SecureLoad Pro Cargo Nets

Available in two sizes, including 3 ft x 4 ft and 4 ft x 6 ft, these heavy-duty bungee nets provide ample coverage for various cargo areas. Crafted from durable polyester webbing.



TrailMaster Pro 48" Off-Road Auto Farm Jack

Crafted from cast steel, it boasts a robust design with a high capacity of 6614 lbs. With a lift range from 5.12 inches to 41.14 inches. It weighs just 27.56 lbs. Packed dimensions: L49 W11 H5, Weight: 29 lbs.

Size:

L49 W11 H5

Weight:

29 lbs



Kermode Solar Rover Folding

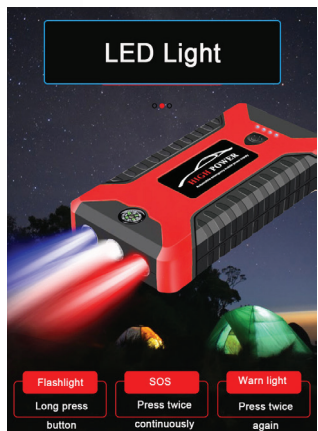
Solar Panel Kit 200 W & 300 W

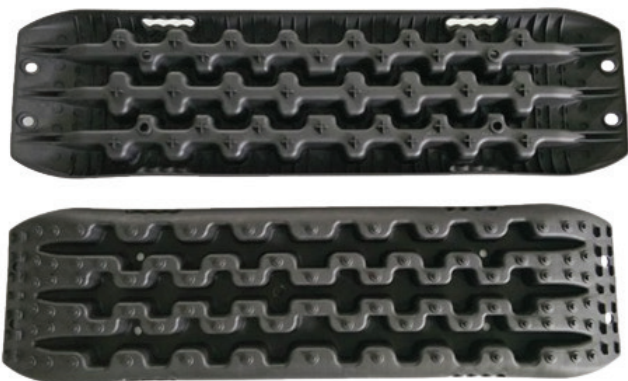
Available in 200W and 300W options. With dimensions of 48.9 x 21.7 x 0.6 inches and weighing 6.6 lbs (200W) or 24 lbs (300W), it's compact and lightweight. Featuring high efficiency monocrystalline silicon and a universal USB interface. It withstands outdoor conditions.



Power Jump Starter Battery Charger

Measuring 6.5 x 3.23 x 1.38 inches. It features dual USB ports for fast charging and reliable low-temperature start-up. Advanced safety features like over-discharge protection and an LED light for visibility. Equipped with anti-reverse protection and fast charging capability. Offering a starting current of 300A and a peak current of 600A.





Recovery Board Black

Measuring (47.2" x 13.8" x 4.7") and weighing approximately 16 lbs. Crafted from reinforced strong nylon, are available in tactical black, offering versatile mounting options and universal compatibility with various vehicles.



Recovery Board Red

Measuring 59 inches in length, 13 inches in width, and 6 inches in height, with a weight of approximately 15 lbs. Crafted from reinforced strong nylon. Includes spot to use a jack for extra bracing.

Red Reserve 20L Jerry Can

Measuring L34 W16 H14.5 (in inches) and weighing 27 lbs. Crafted from 4mm thick PE plastic, it promises long-lasting performance. It includes a Jerry Can Lock with Key.



Red Reserve 5L Jerry Can

Portable fuel storage solution with dimensions of L20.5" W20.5" H13" and a weight of 22 lbs. With a seamless design made from 4mm thick PE plastic. Complete with a spill-proof spout and Mount Bracket. Comes with a lock with a key.





Camping Swivel Outdoor Grill

Portable fire cooking grill

Durable, adjustable, and easy to assemble, this grill offers versatile cooking options and efficient heat distribution. Adjustable and portable, it's perfect for outdoor cooking. Dimensions: 50" L x 30" W x 3" H; Weight: 7.5 lbs.

Size:

50" L x 30" W x 3"

Weight:

7.5 lbs

Rover Table Wheel Mount

Elevate your outdoor experiences with our auto wheel-mounted table, the perfect companion for camping, overlanding, or any outdoor activity. It provides a spacious, sturdy surface of 107/73 x 51 x 43/83 cm that easily attaches to your vehicle's wheel. Its durable metal mesh is both weather resistant and simple to clean.





Kermode Sunshower 20L/30L Auto Shower

Available in two sizes: 20L (5.3 Gallon) and 30L (8 Gallon). Utilising solar energy, it heats water up to 140°F (60°C) for a warm shower in remote locations. With dimensions of 46 x 11 x 8 inches and 47 x 10 x 10 inches respectively, it's easy to connect to standard garden hoses for refilling. Weighing 15.4 lbs and 20 lbs. Includes temperature gauge.



Water and Sanitation

Portable Toilet 20L Classic

Crafted from durable materials, it's compact, weighing just 13.2 lbs with dimensions of approximately 18" x 16" x 17". Advanced pump and rotating spout for over 50 flushes. 5.3-gallon capacity with a separate emptying opening. Supports up to 440 lbs.

Size:	Weight:
18" x 16" x 17"	13.2 lbs



Portable Toilet 20L w/ buckle handle

EcoTrek 5.3 Gallon (20L) Portable Camping Toilet: Engineered for the outdoors with high-grade PP and ABS materials, this compact, leak-proof toilet offers a seamless and efficient flushing system, providing over 50 flushes from its 3-gallon tank. The separate 5.3 gallon waste compartment ensures easy disposal. It's sturdy enough to support up to 440 lbs, making it perfect for camping, RVs, and boating.

Size:	Weight:
76+ square feet.	8.8 lbs

SoloShield Personal tent/ Privacy Tent

Standing tall at 7.38 feet with dimensions of 5.25 x 5.25 ft. Crafted from a durable 190T Polyester with UV50 protection and a PU2000mm waterproof rating. Weighing just 11 pounds. Handy features like clotheslines, storage pockets, and easy assembly. Packed dimensions: L23 W8 H8. Weight: 8 lbs.

Size:	Weight:
5.25 x 5.25 ft.	8 lbs



Kermode Auto Personal Tent Alu Shell

Attached to your vehicle and is made from a 420D Oxford canvas. Aluminium alloy frame and hard metal cover with metal backing. Includes a shower tent floor mat, toiletries storage bag, and waterproof bag for personal items, along with support for a fixed shower setup.





Flexi Glow LED Pro Light

Discover unparalleled illumination with our folding LED light, suitable for both indoor and outdoor use. Powerful 5040 lumens with an adjustable color temperature range from 3000K to 6500K. Energy-efficient and USB-powered, it features multiple modes and is operated by a convenient wireless remote.



TriLight 360 Outdoor Pro

Sophisticated and robust camping light mounted on a tripod stand. Featuring 360-degree swivel LED lights with three adjustable modes (30W, 60W, 90W, and 99W). Dual colour modes (yellow and white), waterproof design, and high-intensity LED power delivering 9500 lumens. Has an extendable tripod stand adjusted from 0.75 m to 2.5 m.

Power and Lighting

Conpex Mega Power 1200W

The Conpex MegaPower 1200W, your reliable high-capacity solution for all outdoor and emergency needs. Boasting a robust 1008Wh battery and 1200W output, it effortlessly powers a range of devices. Designed for versatility, it comes with multiple AC outlets, a car charger, USB ports, and a Type-C port, all protected by advanced safety features. Its portable design, complete with a handle and a clear digital display.



Conpex PowerHub 330 W



A versatile and robust outdoor power supply. With a 285Wh battery and 300W power output, it offers ample energy to charge multiple devices, compatible with household power standards. Featuring various charging methods including AC, solar, and vehicle plug-in. Dual wireless charging, rapid PD 60W charging, and multiple port options provide flexibility for charging smartphones, laptops, and more. Compact and portable, with UL certification and a BMS system for enhanced security.

Small kitchen box pure version

The water dispenser is separated from the desktop, which can be quickly installed when in use



Gas stove



Water handling machine



Water tank



A folding table is standard

Table top can be raised and lowered horizontally

Packing weight about 13kg

Dimension weight

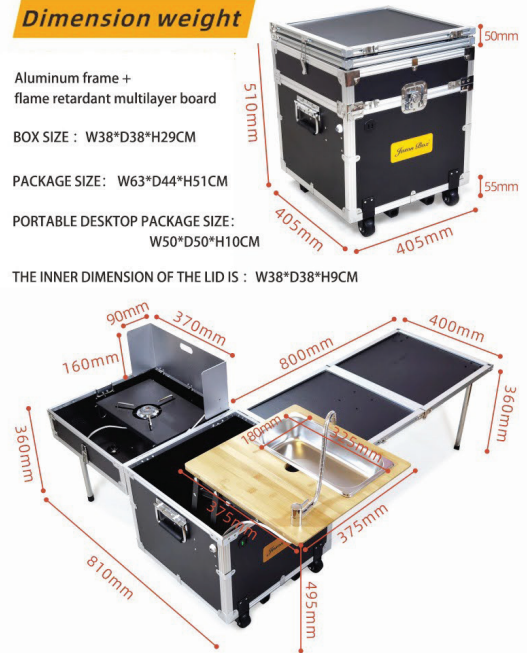
Aluminum frame + flame retardant multilayer board

BOX SIZE : W38*D38*H29CM

PACKAGE SIZE : W63*D44*H51CM

PORTABLE DESKTOP PACKAGE SIZE : W50*D50*H10CM

THE INNER DIMENSION OF THE LID IS : W38*D38*H9CM



Integrated water dispenser with use
The water applicator should be used when raising the table



Precision grooving

Express handling



ANODIZING
ALUMINIUM ALLOY
DRAUGHT BOARD
Integrated pneumatic opening and closing



40L
LARGE CAPACITY

× 50

BAMBOO DESKTOP
Strong and durable bamboo natural creation

Outdoor kitchen



Cooking & Power Solutions



TrailChef Deluxe Mobile Kitchen Station

With dimensions of 22.8 x 19.7 x 19.7 inches and a weight of 28.7 lbs, it's compact and lightweight. Equipped with a butane stove, sink, ample storage, and fold-out food prep sections. Crafted from Aluminium and Stainless Steel. Complete with accessories and fueled by butane gas.

Size:
22.8 x 19.7 x 19.7

Weight:
28.7 lbs





EXPLORE BEYOND LIMITS

Address

2620 Southforks Rd Nanaimo
(Only by appointment)

C: 1-250-740-1844

E: info@kermodeoverland.com

Copyright © 2024 Kermode Overland

All Rights Reserved.

Marketing by evolutionbusiness.ca

